

Town Walks:
Victorian Walk

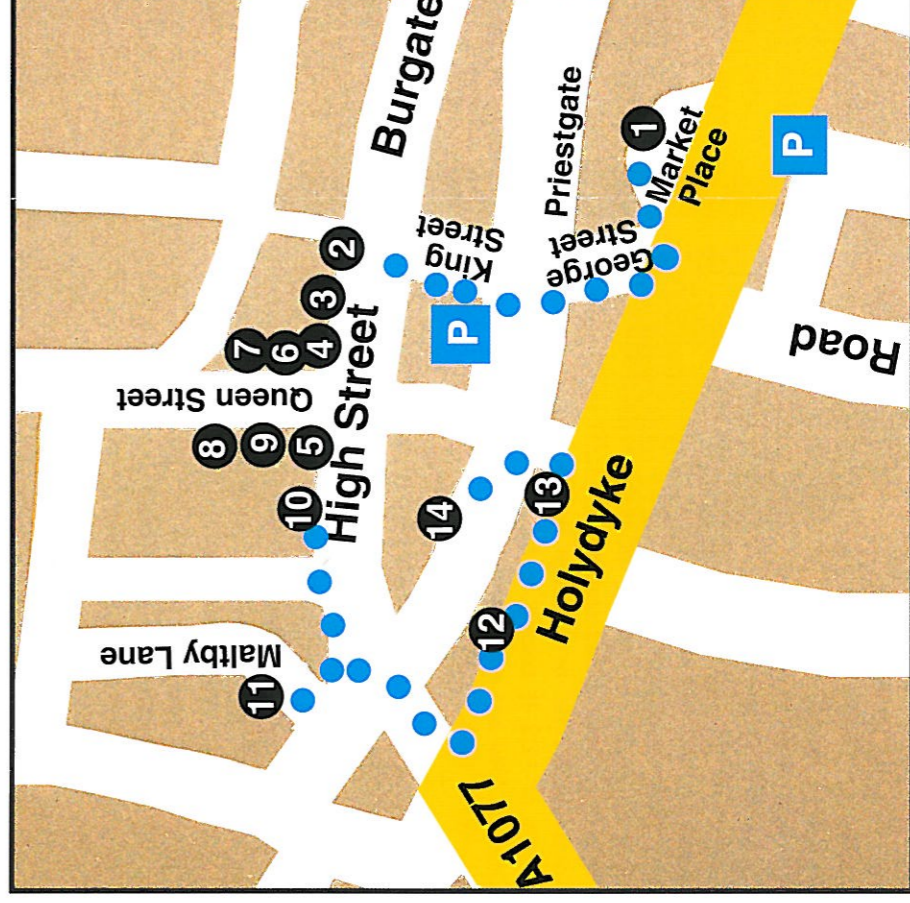
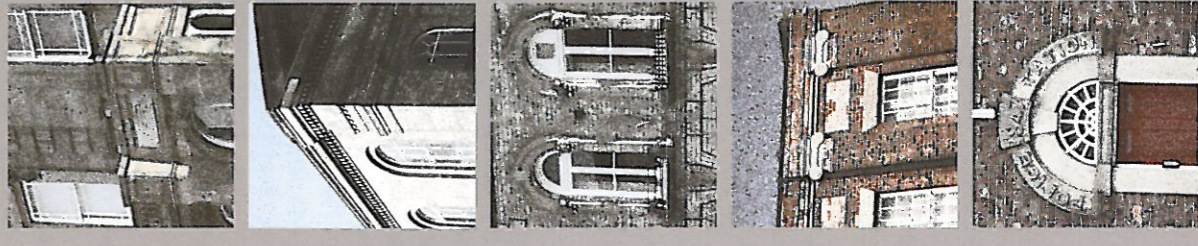


Discover
Barton

Victorian Walk

During Queen Victoria's reign (1837 - 1901) Barton's population nearly doubled. There were tremendous economic and social changes, and these are reflected in the wealth of Victorian public and private buildings which remain as a legacy of this period.

1. The Corn Exchange
2. Elm Tree House
3. The Former Police Station and Magistrates' Court
4. The Odd Fellows' Hall
5. Queen Street
6. The Salvation Army Citadel (formerly the Primitive Methodist Chapel)
7. The former National or Church School
8. 13 and 15 Queen Street
9. The Assembly Rooms (formerly the Temperance Hall)
10. 26 - 28 High Street
11. The Barton Youth Centre (formerly the Wesleyan Methodist Day School)
12. Providence House
13. Trinity Methodist Chapel
14. Chapel Lane Terrace: Nos. 8 - 24



This walk is one of a series produced by members of the Barton-upon-Humber Civic Society Heritage Trail Sub-Committee. The walks are designed to focus on a particular part of the town and should take about an hour to complete.

Every attempt has been made to ensure the accuracy of the information contained in this leaflet. No responsibility can be accepted for any remaining errors.

Barton-upon-Humber Civic Society aims to maintain a pleasant townscape by helping to preserve buildings of historic or architectural importance and encouraging the construction of new buildings of good design. Our programme of activities includes illustrated talks, walks and help with practical projects. There are also visits to other villages, towns and cities.

Acknowledgments

Thanks to the residents of Barton for information, in particular John French, Claire Halstad, the late Ron Newton and Rex Russell.

Barton upon Humber Civic Society
OS licence number 100047082

First published 1994; reprinted 1998; redesigned and reprinted 2007

Barton upon Humber has a rich and varied history like many Market Towns in England, however it stands apart from the rest by virtue of the in-depth research and numerous publications about the town's heritage.

This walk is one of a series of 5 free leaflets produced by Barton upon Humber Civic Society

Urban walks:

Victorian Walk
Georgian Walk
Waterside Walk

Rural walks:

Parish pathways Inland
Parish pathways Humber Bank and area

These walks give a brief insight into Barton's past which can be followed in greater detail in the Town Guide reprinted by the Civic Society in 2007.

Further reading is available through the extensive work of the Barton on Humber Branch of the Workers' Education Association. Currently in print and available to buy are the following titles:

Great Changes in Barton: 1793 – 1900
by Rex C. Russell
The Medieval Churches of Barton on Humber
by Geoffrey F. Bryant
Barton and the River Humber 1086 – 1900
by Rodney Clapson
The Church in Victorian Barton
by Dinah Tyszka

Also available:

Published by the Community, Heritage, Arts & Media Project (CHAMP)
My Childhood Playground by Ron Newton

Published by Fathom Press (available from July 2007)

Family Ties by Nick Triplov
Ropeworks by Will Fenton

